

| Spare parts and accessories for ICM 20-65 |  | Description   | Qty                     | Code no. |          |
|---|--|---|-------------------------|----------|----------|
|   |  | <b>Top cover/Function module, fig. 1</b> (including gasket and O-rings) |                         |          |          |
|   |  | Pos. 2  | ICM 20-A                | 1        | 027H1180 |
|   |  | Pos. 2  | ICM 20-B                | 1        | 027H1181 |
|   |  | Pos. 2  | ICM 20-C                | 1        | 027H1182 |
|   |  | Pos. 2  | ICM 25-A                | 1        | 027H2180 |
|   |  | Pos. 2  | ICM 25-B                | 1        | 027H2181 |
|   |  | Pos. 2  | ICM 32-A                | 1        | 027H3180 |
|   |  | Pos. 2  | ICM 32-B                | 1        | 027H3181 |
|   |  | Pos. 2  | ICM 40-A                | 1        | 027H4180 |
|   |  | Pos. 2  | ICM 40-B                | 1        | 027H4181 |
|   |  | Pos. 2  | ICM 50-A                | 1        | 027H5180 |
|   |  | Pos. 2  | ICM 50-B                | 1        | 027H5181 |
|   |  | Pos. 2  | ICM 65-B                | 1        | 027H6181 |
|   |  | <b>Actuator, fig. 1</b>   |                         |          |          |
|   |  | Pos. 11,16 for ICM 20, 25 and 32  | ICAD 600 with cables    | 1        | 027H9065 |
|   |  |   | ICAD 600 without cables | 1        | 027H9100 |
| Pos. 16 for ICM 40, 50 and 65             | ICAD 900 with cables   | 1   | 027H9066                |          |          |
|   | ICAD 900 without cables  | 1   | 027H9101                |          |          |
| Pos. 16 for ICM 40, 50 and 65             | ICAD 1200 with cables  | 1   | 027H9067                |          |          |
|   | ICAD 1200 without cables   | 1   | 027H9102                |          |          |
| <b>Disassembly kit, fig. 1</b>            |  |   |                         |          |          |
| Pos. 2c, 13, 14                           | ICAD/ICM 20-32 (incl. grease)  | 1   | 027H1207                |          |          |
| Pos. 2c, 13, 14                           | ICAD/ICM 40-65 (incl. grease)  | 1   | 027H1208                |          |          |
| Pos. 4, 12, 15                            | ICM 20-A / ICM 20-A-33<br>(Metal with plastic seat)<br>ICM 20-B / ICM 20-C<br>(Plastic seat) | 1   | 027H1190                |          |          |
| Pos. 2a, 2b, 4a                           | ICM 25   | 1   | 027H2220                |          |          |
| Pos. 2a, 2b, 4a                           | ICM 32   | 1   | 027H3220                |          |          |
| Pos. 2a, 2b, 4a                           | ICM 40   | 1   | 027H4220                |          |          |
| Pos. 2a, 2b, 4a                           | ICM 50   | 1   | 027H5220                |          |          |
| Pos. 2a, 2b, 4a                           | ICM 65   | 1   | 027H6220                |          |          |
| <b>Top cover blind, fig. 2 and 3</b>      |  |   |                         |          |          |
| fig. 2                                    | ICM 20   | 1   | 027H1174                |          |          |
| fig. 2                                    | ICM 25   | 1   | 027H2174                |          |          |
| fig. 2                                    | ICM 32   | 1   | 027H3174                |          |          |
| fig. 3                                    | ICM 40   | 1   | 027H4174                |          |          |
| fig. 3                                    | ICM 50   | 1   | 027H5174                |          |          |
| fig. 3                                    | ICM 65   | 1   | 027H6174                |          |          |
| <b>Multi-function tool, fig. 4</b>        |  |   |                         |          |          |
|   | Multi-function tool for ICM 20, 25, 32   | 1   | 027H0180                |          |          |
|   | Multi-function tool for ICM 40, 50, 65   | 1   | 027H0181                |          |          |

Pos. 1 - valve body can be ordered separately (see ICM technical leaflet)

Fig. 1

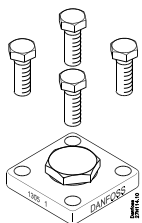


Fig. 2 - Top cover blind ICM 20

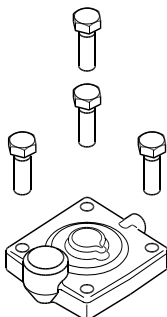


Fig. 3 - Top cover blind ICM 25-65

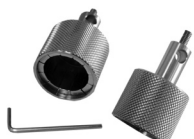

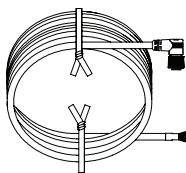
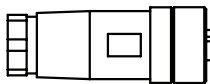
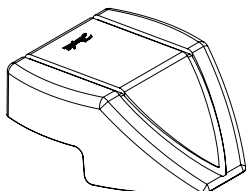


Fig. 4 - Multi-function tool

| Spare parts and accessories for ICM 20-65   | Description   | Qty  | Code no.   |
|---|---|--|--|
|  <p data-bbox="67 517 220 555">Fig. 5 - ICAD-UPS</p>                                      | <p data-bbox="655 300 826 331"><b>ICAD-UPS, fig. 5</b></p> <p data-bbox="655 353 874 385">ICAD-UPS for ICM 20-65</p>  | <p data-bbox="1262 353 1283 385">1</p>   | <p data-bbox="1321 353 1426 385"><b>027H0182</b></p>   |
|  <p data-bbox="67 754 427 784">Fig. 6 - Cables for ICAD 600, 900 and 1200</p>             | <p data-bbox="655 568 1078 600"><b>Cables for ICAD 600, 900 and 1200, fig. 6</b></p> <p data-bbox="655 622 868 654">Cable set 1.5 m, female</p> <p data-bbox="655 654 868 685">Cable set 10 m, female</p> <p data-bbox="655 685 868 716">Cable set 15 m, female</p>   | <p data-bbox="1262 622 1283 654">1</p> <p data-bbox="1262 654 1283 685">1</p> <p data-bbox="1262 685 1283 716">1</p> | <p data-bbox="1321 622 1426 654"><b>027H0426</b></p> <p data-bbox="1321 654 1426 685"><b>027H0427</b></p> <p data-bbox="1321 685 1426 716"><b>027H0435</b></p> |
|  <p data-bbox="67 934 469 963">Fig. 7 - Connectors for ICAD 600, 900 and 1200</p>         | <p data-bbox="655 815 1126 846"><b>Connectors for ICAD 600, 900 and 1200, fig. 7</b></p> <p data-bbox="655 869 1070 900">Two Female Connectors with screw terminals:</p> <ul data-bbox="655 900 943 949" style="list-style-type: none"> <li>- connector for power</li> <li>- connector for control signals</li> </ul> | <p data-bbox="1262 869 1283 900">1</p>   | <p data-bbox="1321 869 1426 900"><b>027H0430</b></p>   |
|  <p data-bbox="67 1216 497 1245">Fig. 8 - Protection cap for ICAD 600, 900 and 1200</p> | <p data-bbox="655 994 1158 1025"><b>Protection cap for ICAD 600, 900 and 1200, fig. 8</b></p> <p data-bbox="655 1048 1118 1133">ICAD protection cap for all outdoor applications or where extra protection of the display and keyboard is needed.</p>   | <p data-bbox="1262 1048 1283 1079">1</p>   | <p data-bbox="1321 1048 1426 1079"><b>027H0431</b></p>   |